

## ➔ EM Lock

Magnet(L X W X H ) : 250 X 42 X 26 mm

Armature Plate(L X W X H ) : 180 X 38 X 11 mm

Current : 400 mA

Power : 12V

Holding Force : 600lbs

Holding Capacity : 230Kg

Temperature : 10°C – 55°C

Operating Humidity : 0%-95% (Non-Condensing)

Finishing : Zinc

Suitable for : Wooden door, Glass door,

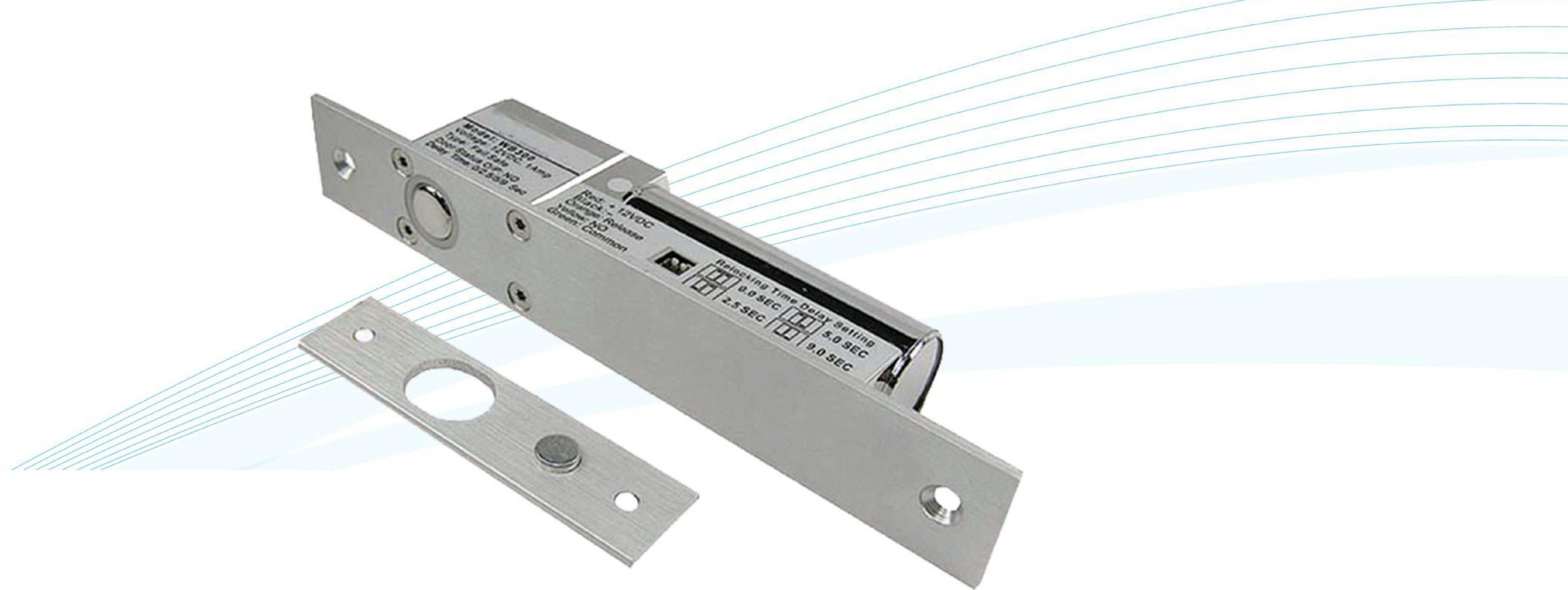
Alluminium door, Fireproof door

Optional Accessories : L Bracket ,U Bracket ,

ZL Bracket ,U Bracket for Glass Door

### Features:

- ▶ Green/red LED indication for lock status
- ▶ Design with no Mechanical Bolt
- ▶ Voltage and current spike protection PCB
- ▶ Request-to-open, Auto-relock if no Action
- ▶ Silent operation: no humming or buzzing



## ➔ Drop Bolt Lock

Magnet(L xWxH ) : 250 X 42 X 26 mm

Armature Plate(L xWxH ) : 180 X 38 X 11mm

Current Drawn : 450 mA

Voltage :12 V

Holding Force : 230 Kg

Holding Capacity : 600 lbs

Electrode : Red : Positive

: Black : Negative

Operating Temperature : 10°C - 55°C

Operating Humidity 0%-95% (Non-Condensing)

Suitable For : Wooden Door,

Glass Door, Metal Door

Optional Accessories : L Bracket ,U Bracket ,

ZL Bracket ,U Bracket for Glass Door

### Features:

- ▶ Fail safe operation
- ▶ Low Temperature, safe & Durable
- ▶ Low Power, Environmental Protection
- ▶ Reverse current protection PCB
- ▶ Superior Strength Aluminum Alloy,  
Solid Stainless Steel Bolt



## ➔ Glass Door Bolt Lock

Dimension (L X W) : 212 x 35mm

Armature Plate(L X W X H ) : 90 x 25 x3mm

Current : 950mA

Power : DC 12 V

Red : Positive

Black : Negative

Bolt Size : 15.5mm diameter Stainless,

Out throw 15mm

Temperature : 10°C - 55°C

Operating Humidity : 0%-95% (Non-Condensing)

Suitable For : Wooden Door, Glass Door,

Metal Door

Optional Accessories : U Bracket,

U Bracket for Glass Door

### Features:

- ▶ Fail safe operation
- ▶ Low Temperature, safe & Durable
- ▶ Low Power, Environmental Protection
- ▶ Reverse current protection PCB
- ▶ Superior Strength Aluminum Alloy,  
Solid Stainless Steel Bolt



## ➔ Auto feedback Lock

Magnet(L xW xH ) : 250 X 42 X 26 mm

Armature Plate(LxWxH ) : 180 X 38 X 11 mm

Mounting Plate(LxWxH ) : 250 x 25 x 6mm

Current : 500 mA

Power : 12 V

Holding Capacity : 230 Kg

Holding Force : 600lbs

Temperature : 10°C – 55°C

Operating Humidity : 0%-95% (Non-Condensing)

Optional Accessories :

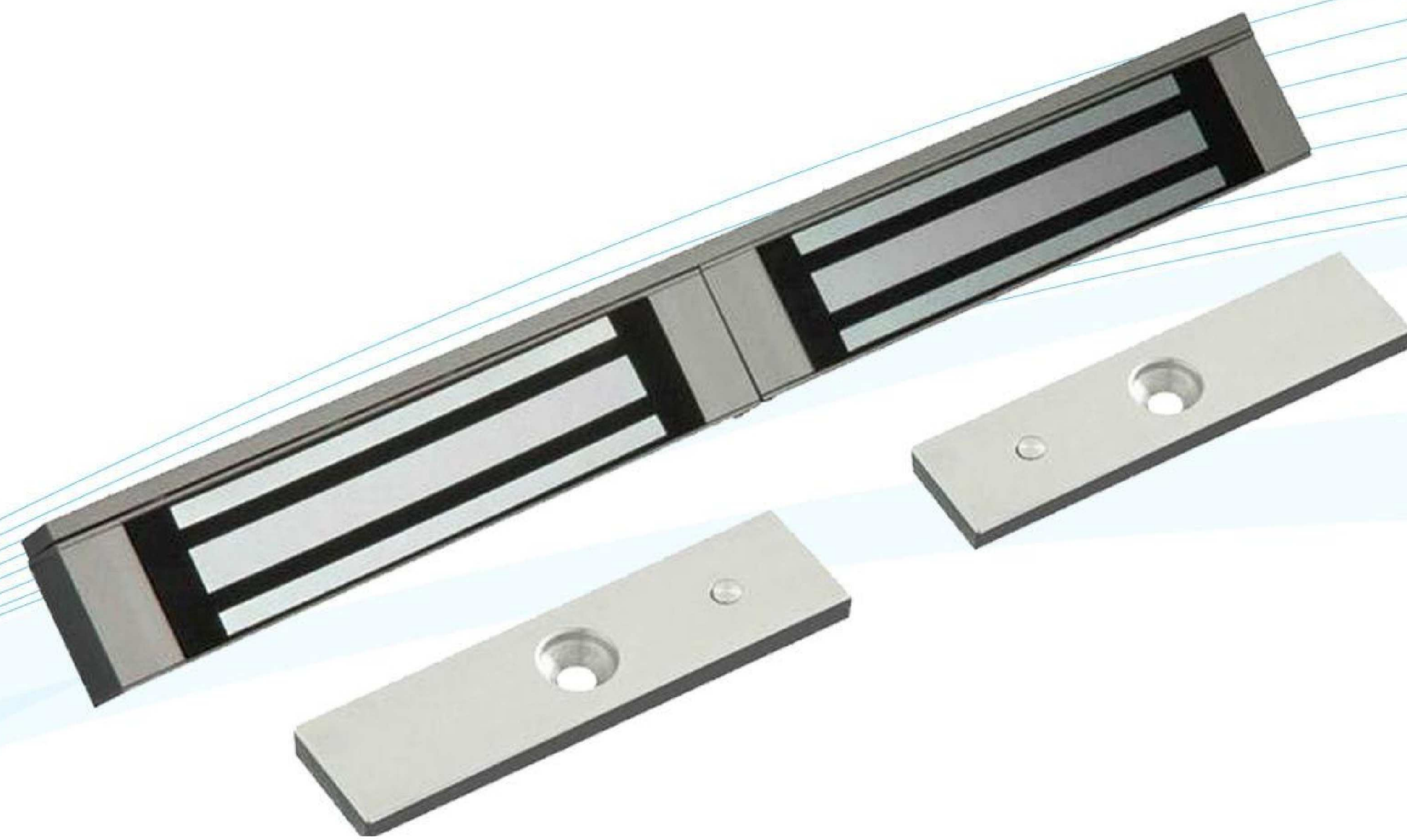
L Bracket ,U Bracket ,ZL Bracket

Suitable for : Wooden door, Glass door,

Alluminium door, Fireproof door

### Features:

- ▶ Green/red LED indication for lock status
- ▶ Design with no Mechanical Bolt
- ▶ Voltage and current spike protection PCB
- ▶ Superior Strength Aluminum Alloy, Solid Stainless Steel Bolt
- ▶ Silent operation: no humming or buzzing



## ➔ Double Door EM Lock

Magnet(L X W X H ) : 500 x 42 x 25mm

Armature Plate(L X W X H ) : 180 X 38 X 11 mm

Current : 1amp @ 12 VDC

Power : 12V

Holding Force : Upto 600lbs x 2

Holding Capacity : 230kg x 2

Temperature : 0°C – 55°C

Operating Humidity : 0%-95% (Non-Condensing)

Anti-Rust Surface Treatment : Zinc Plating

Suitable for : Wooden door, Glass door,

Alluminium door, Fireproof door

Optional Accessories : L Bracket ,U Bracket ,

ZL Bracket

### Features:

- ▶ Green/red LED indication for lock status
- ▶ Design with no Mechanical Bolt
- ▶ Voltage and current spike protection PCB
- ▶ Request-to-open, Auto-relock if no Action
- ▶ Silent operation: no humming or buzzing